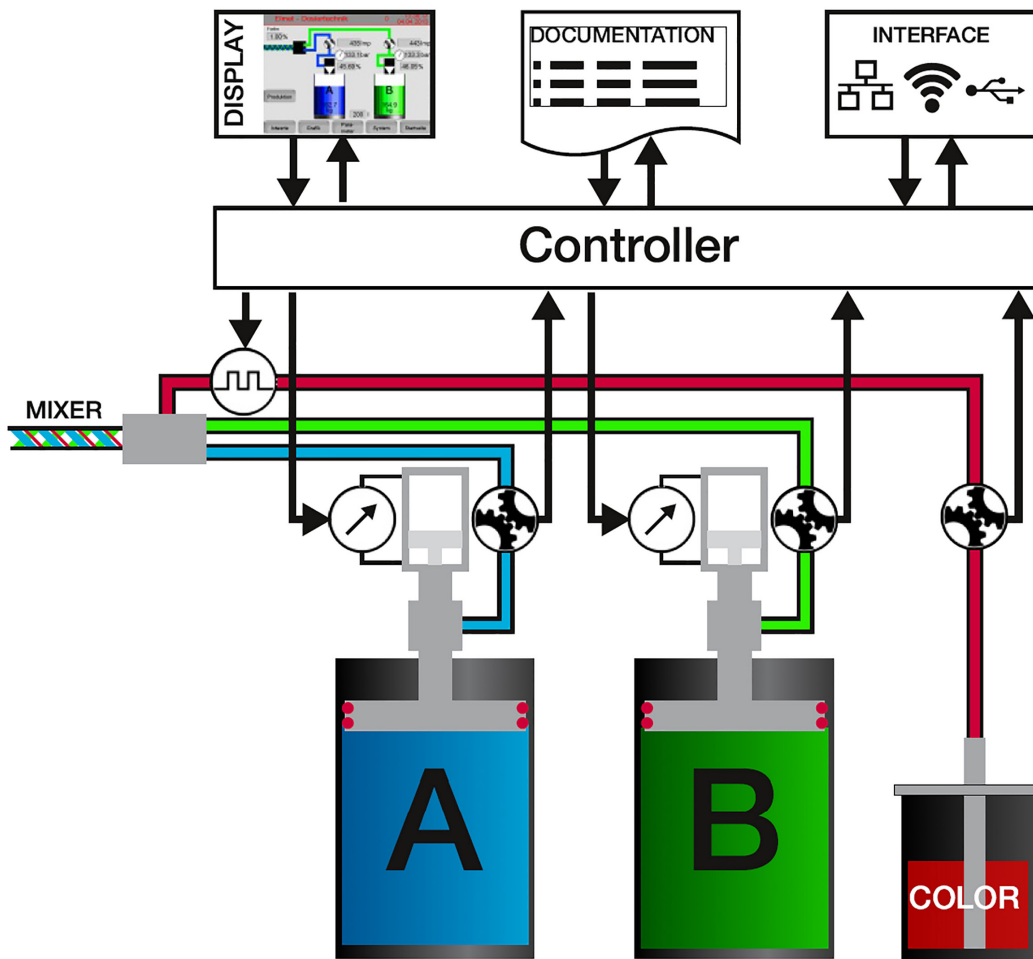


LIQUID INJECTION MOLDING
IMPROVED SAFETY BY
COLOR CONTROL



E L M E T
ELASTOMER IS OUR BUSINESS





- Volumetric color flow measuring with 1.689.600 increments per liter
- Direct integration into the control system of liquid silicone dosing
- Tolerance in color ratio in the range of hundredth of one per cent
- Permanent documentation of the color flow including data export
- Definable warning and alarm levels for monitoring deviations
- Ready for retro fit for the TOP 3000 serie with S-DIAS controller

PROTECTS FROM FAILURES AND MINIMIZES DAMAGES



Avoids production after end of color or defect in the system



Compensates wear and contamination of the color system



Shuts system down at operation errors before damages occur



Regulates the color ratio at changes in the LSR pressure



Stops when chosen settings are beyond physical limits



Equalizes variations in the viscosity of the different materials



**ELMET Elastomere
Produktions- und
Dienstleistungs GmbH**

Tulpenstraße 21
4064 Oftring
Austria

Tel.: +43 (0)7221 / 74577-0
E-Mail: office@elmet.com



**ELMET
North America Inc.**

1541 W. Round Lake Road
Dewitt, MI 48820
USA

Tel.: +1 866 628 6499
E-Mail: office@elmet.com

ELMET 
ELASTOMER IS OUR BUSINESS

www.elmet.com